

AMI 5,5 N-WAY



- Loading capacity 5500 kg
- Designed for 3D geometry measurement
- Symmetric post design
- Variable platform distance (1000 mm ÷ 1700 mm)
- Ergonomic cover
- High stiffness and static stability
- Economically profitable hydraulic drive
- Pneumatic control of gravity latches
- Acoustic stop signalling
- Regulation of lowering speed
- Czech made
- Complies to requirements of ČSN EN 1493:2023

AL PLATFORM PROTECTION
(ACCESSORIES)



Application:
**Passenger vehicles |
 Commercial vehicles**

Maximum load capacity:
5500 kg

Maximum clear distance of posts:
2970 mm

Axial distance of the posts:
5000 mm | 5450 mm

Clearance width:
2510 mm

Total height:
2440 mm

Overall width:
3340 mm

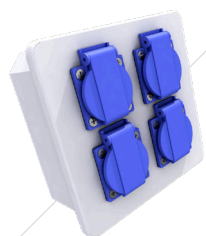
Platform width:
505 mm

Maximum height of platform:
2050 mm

Minimum height of platform:
230 mm

Motor power:
3,0 kW

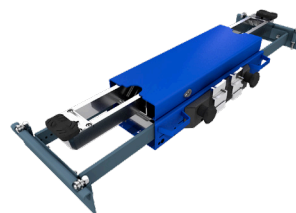
Minimum thickness
 of concrete floor:
160 mm



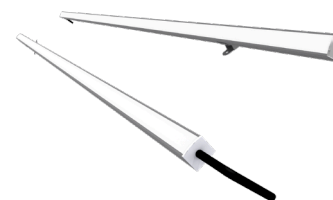
VARIANTS OF ELECTRO BOXES
 (ACCESSORIES)



VARIANTS OF FLOATING PLATES
 (ACCESSORIES)



VARIANTS OF HYDRAULIC JACKING BEAMS
 (ACCESSORIES)



LED LIGHTING WITH INTENSITY CONTROL
 (ACCESSORIES)



TECHNICAL DATA



ADDITIONAL ACCESSORIES

